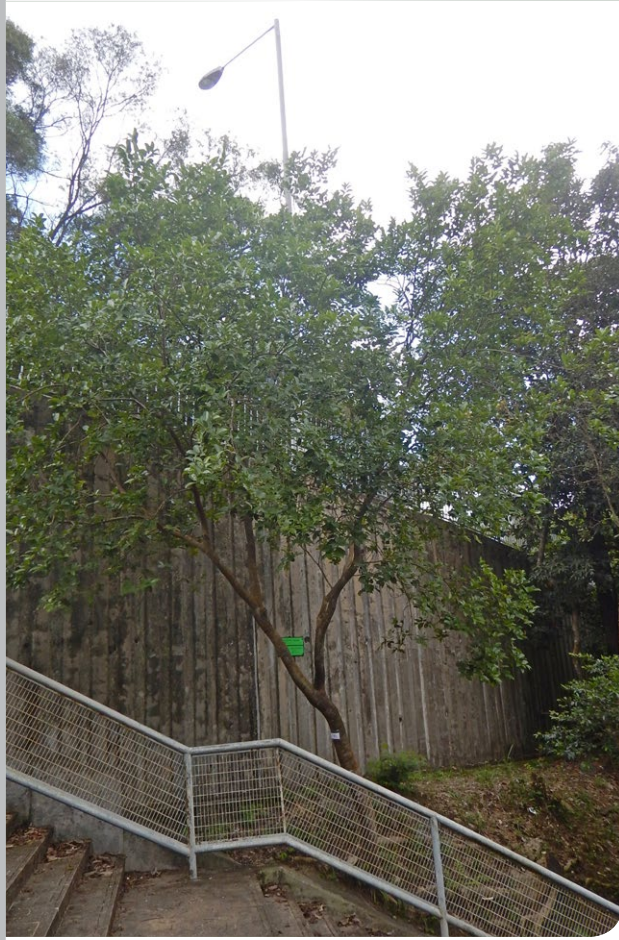


Celtis timorensis
假玉桂, 樟葉朴

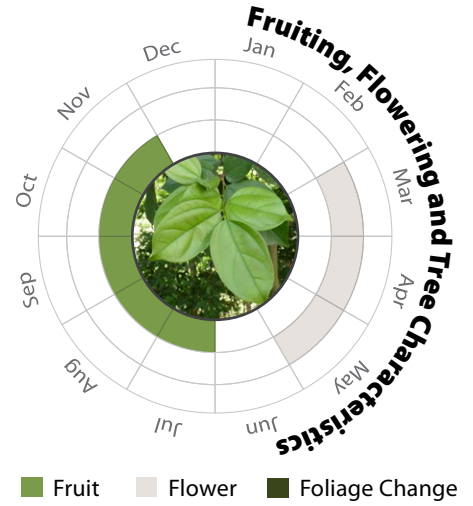
Recommended Street Types



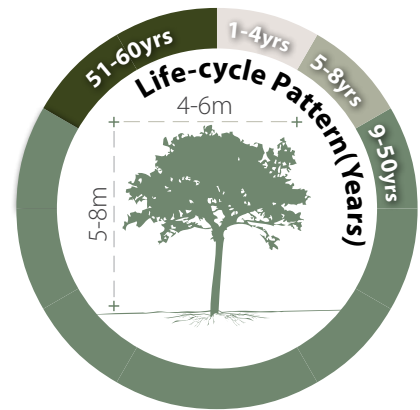
General Information

Native	Exotic	Evergreen	Deciduous	Partial Shade	Full Sun
--------	--------	-----------	-----------	---------------	----------

Family: ULMACEAE **Heat Tolerance:** High
Special Properties : Fruits attractive to wildlife



- Propagation to Seedling
- Sapling to Semi-mature
- Mature
- Senescence



Feature

	H M L		H M L		H M L
Ecological Value		Ornamental		Shade Cast	

Special Maintenance Requirements

- Malodorous wood and tree sap

Tolerance

<p>Drought</p> <p>Low Moderate High</p>	<p>Roadside Pollution</p> <p>Low Moderate High</p>	<p>Soil Compaction</p> <p>Low Moderate High</p>
<p>Waterlogging</p> <p>Low Moderate High</p>	<p>Pest & Disease Resistance</p> <p>Low Moderate High</p>	<p>Root System</p> <p>Aggressive Moderate Manageable</p>
<p>Wind</p> <p>Low Moderate High</p>	<p>Pruning</p> <p>Low Moderate High</p>	<p>Soil Volume</p> <p>Large Medium Small</p>
		<p>pH of Soil</p> <p>H M L</p> <p>Adaptability</p>