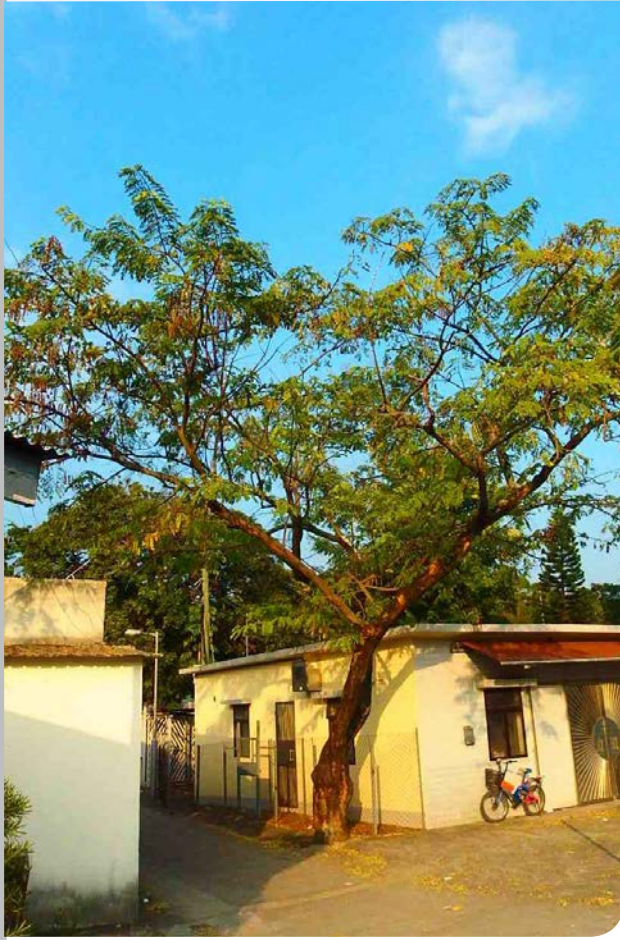


Dalbergia assamica

南嶺黃檀

Recommended Street Types

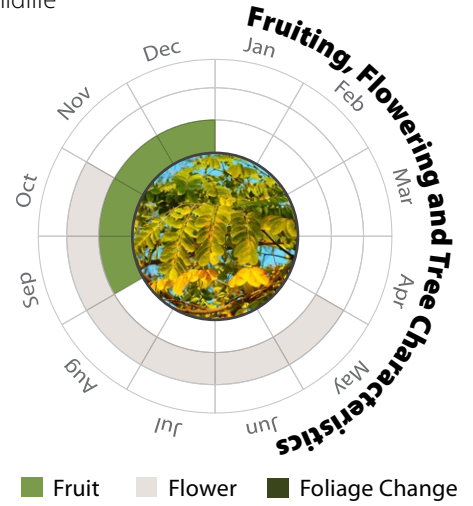


General Information

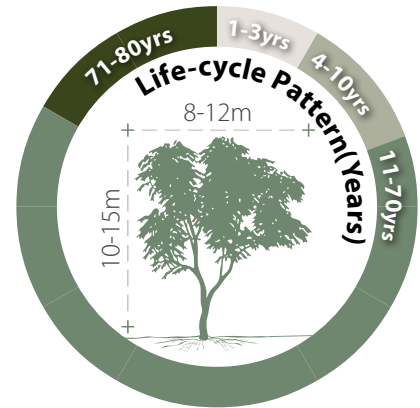
Native Exotic Evergreen Deciduous Partial Shade Full Sun

Family: FABACEAE Heat Tolerance: Moderate

Special Properties : Good host tree for *Laccifer Lacca*; Symbiotic relationship with nitrogen-fixing soil bacteria; Flowers attractive to wildlife



- Propagation to Seedling
- Sapling to Semi-mature
- Mature
- Senescence



Feature

	H M L		H M L		H M L
Ecological Value		Ornamental		Shade Cast	

Special Maintenance Requirements

- No Special Maintenance Requirements

Tolerance

<p>Drought</p> <p>Low Moderate High</p>	<p>Roadside Pollution</p> <p>Low Moderate High</p>	<p>Soil Compaction</p> <p>Low Moderate High</p>
<p>Waterlogging</p> <p>Low Moderate High</p>	<p>Pest & Disease Resistance</p> <p>Low Moderate High</p>	<p>Root System</p> <p>Aggressive Moderate Manageable</p>
<p>Wind</p> <p>Low Moderate High</p>	<p>Pruning</p> <p>Low Moderate High</p>	<p>Soil Volume</p> <p>Large Medium Small</p> <p>pH of Soil</p> <p>Adaptability H M L</p>