

**Ficus altissima**  
高山榕, 雞榕

Recommended Street Types

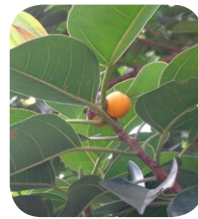


**General Information**

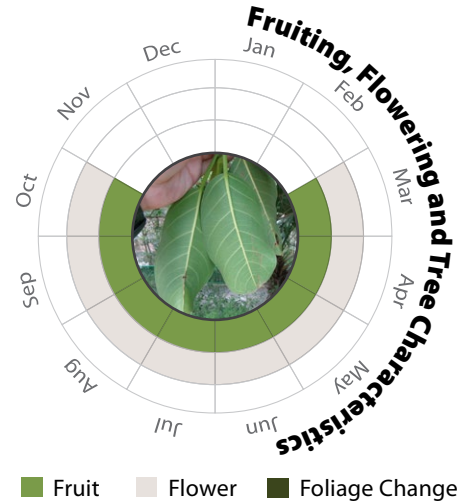
Native  Exotic  Evergreen  Deciduous  Partial Shade  Full Sun

**Family:** MORACEAE **Heat Tolerance:** Moderate

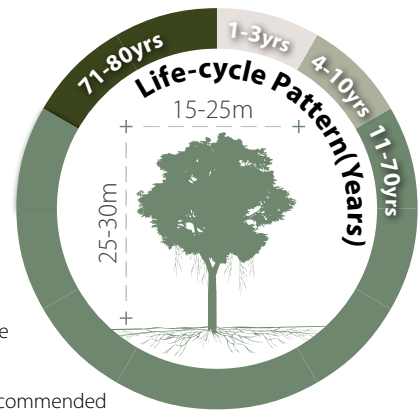
**Special Properties :** Fruits attractive to wildlife, Dense foliage; Roosting site; Aerial roots



Fruits



- Propagation to Seedling
- Sapling to Semi-mature
- Mature
- Senescence



**Feature**



Ecological Value



Ornamental



Shade Cast

**Special Maintenance Requirements**

- Tree sap may cause skin irritation
- Crown thinning may be needed to reduce wind resistance
- Moderate maintenance manageability
- Installation of root barriers or guides is recommended

**Tolerance**

**Drought**

Low Moderate High

**Waterlogging**

Low Moderate High

**Wind**

Low Moderate High

**Roadside Pollution**

Low Moderate High

**Pest & Disease Resistance**

Low Moderate High

**Pruning**

Low Moderate High

**Soil Compaction**

Low Moderate High

**Root System**

Aggressive Moderate Manageable

**Soil Volume**

Large Medium Small

**pH of Soil**

Adaptability