

# Ficus religiosa

菩提樹

Recommended Street Types



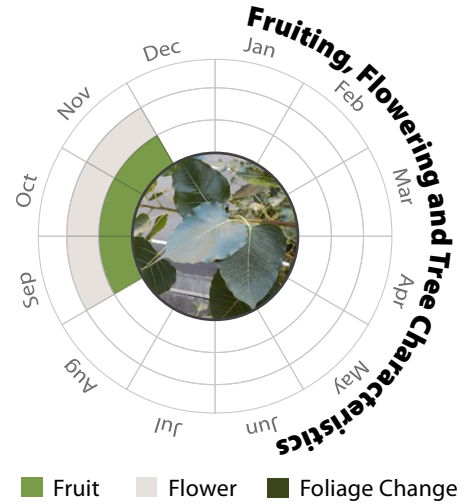
## General Information

Native	Exotic	Evergreen	Deciduous	Partial Shade	Full Sun
--------	--------	-----------	-----------	---------------	----------

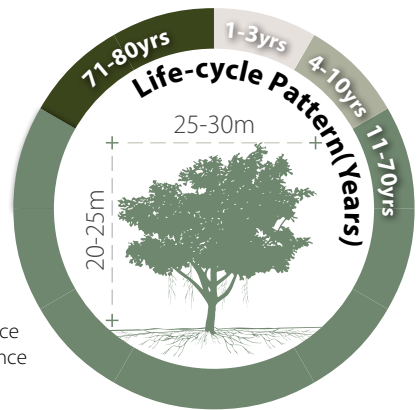
**Family:** MORACEAE **Heat Tolerance:** Moderate  
**Special Properties :** Fruits and seeds attractive to wildlife; Aerial roots; Roosting site



Fruits



- Propagation to Seedling
- Sapling to Semi-mature
- Mature
- Senescence



## Feature

Ecological Value	Ornamental	Shade Cast

## Special Maintenance Requirements

- Tree sap may cause skin irritation
- Buttress root requires a large planting space
- Tree crown may require annual maintenance
- Installation of root barriers or guides is recommended

## Tolerance

<p><b>Drought</b></p> <p>Low Moderate High</p>	<p><b>Roadside Pollution</b></p> <p>Low Moderate High</p>	<p><b>Soil Compaction</b></p> <p>Low Moderate High</p>
<p><b>Waterlogging</b></p> <p>Low Moderate High</p>	<p><b>Pest &amp; Disease Resistance</b></p> <p>Low Moderate High</p>	<p><b>Root System</b></p> <p>Aggressive Moderate Manageable</p>
<p><b>Wind</b></p> <p>Low Moderate High</p>	<p><b>Pruning</b></p> <p>Low Moderate High</p>	<p><b>Soil Volume</b></p> <p>Large Medium Small</p> <p><b>pH of Soil</b></p> <p>Adaptability</p>