

# Melia azedarach

楝, 苦楝



Recommended Street Types



## General Information

Native  Exotic  Evergreen  Deciduous  Partial Shade  Full Sun

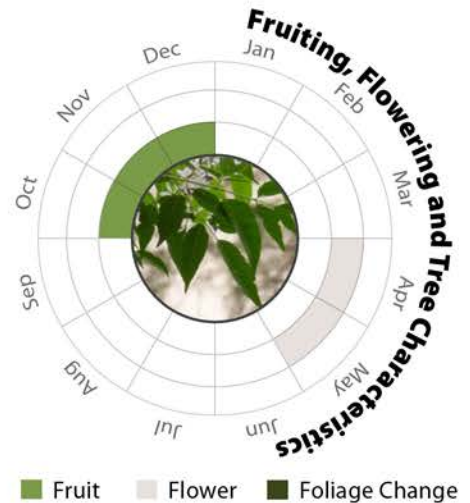
**Family:** MELIACEAE **Heat Tolerance:** High  
**Special Properties:** Fruits and flower nectar attractive to wildlife; tolerates salty coastal winds



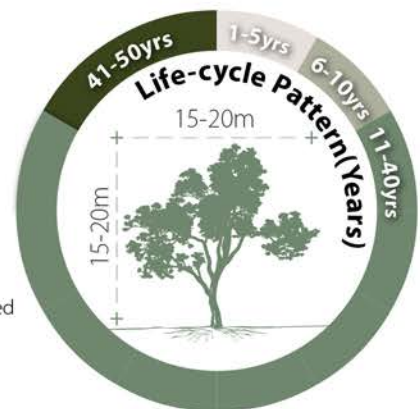
Flowers



Tree Bark



- Propagation to Seedling
- Sapling to Semi-mature
- Mature
- Senescence



## Feature



Ecological Value



Ornamental



Shade Cast

## Special Maintenance Requirements

- Timely removal of leaf litter is recommended to avoid altering soil pH
- Moderate maintenance manageability
- Entire plant is poisonous

## Tolerance

**Drought**

Low    Moderate    High

**Waterlogging**

Low    Moderate    High

**Wind**

Low    Moderate    High

**Roadside Pollution**

Low    Moderate    High

**Pest & Disease Resistance**

Low    Moderate    High

**Pruning**

Low    Moderate    High

**Soil Compaction**

Low    Moderate    High

**Root System**

Aggressive    Moderate    Manageable

**Soil Volume**

Large    Medium    Small

**pH of Soil**

pH Adaptability