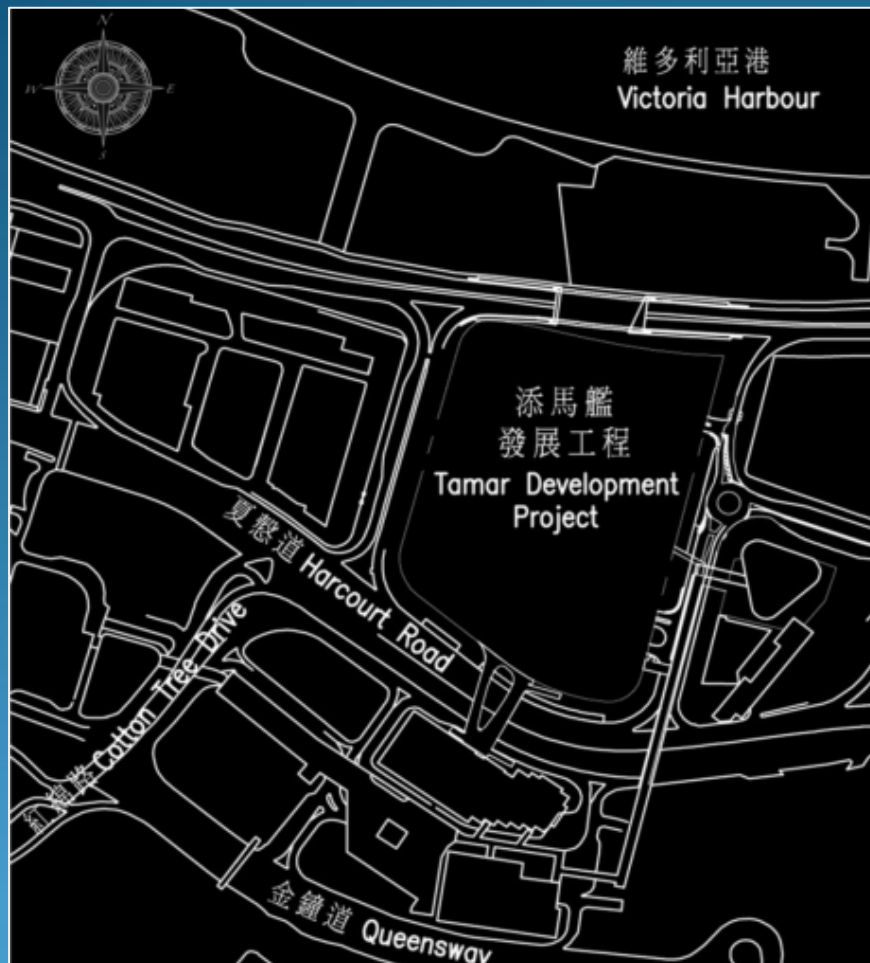




建築署
Architectural Services Department

Disclaimer: The copyright of this presentation rests with the speaker and / or the organization the speaker represents. If you wish to use or reproduce the information shown in this presentation for any purpose; or you have any query related to this presentation, please contact the speaker direct.



The Tamar development is committed on sustainable design to embrace a cleaner future and to bring back the blue sky. It is built upon four main themes:

- ❖ openness
- ❖ enjoyment
- ❖ sustainability
- ❖ togetherness





The **Tamar Park** is a design feature that conveys two gestures: civic harmony and bringing parkland back to the city.

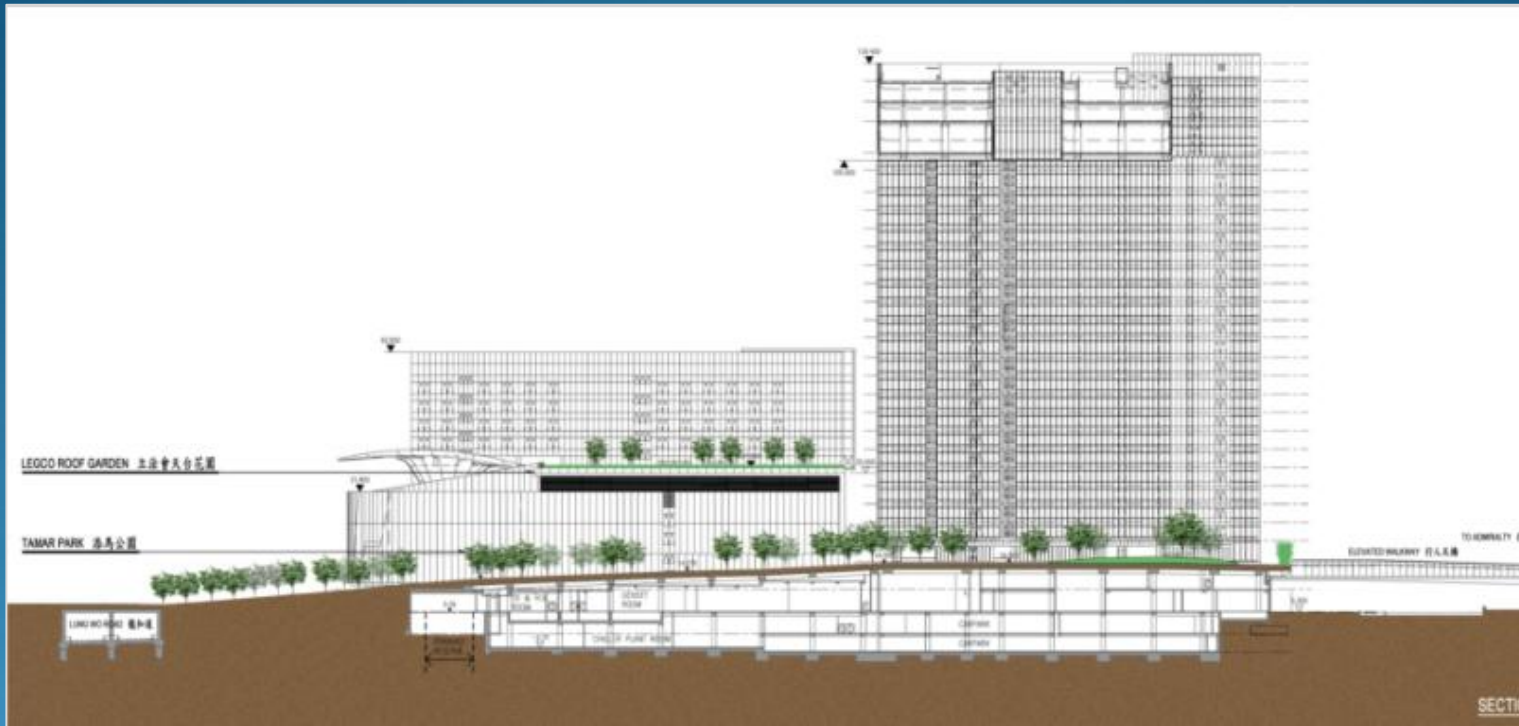


建築署
Architectural Services Department



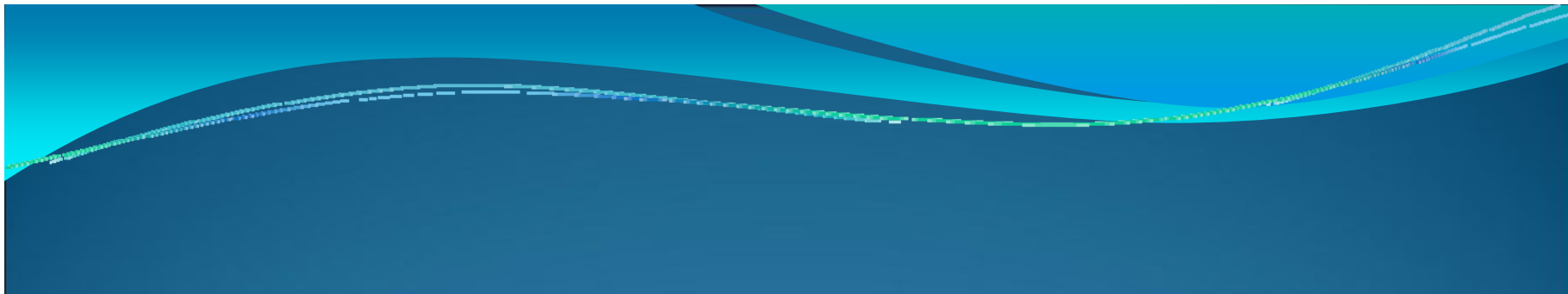
LAYOUT PLAN





With the high point of the Park at the south, the contour of the Park flows towards the waterfront at the north. Shrub beds and tree lines along the east and west edge adopt an informal curvilinear arrangement with an intention to contrast the angularity of the adjoining buildings.





- The enjoyment - “Land Always Green”



建築署
Architectural Services Department



Central Greenery
a seamless connection of
urban green nodes, from
Hong Kong Park to
Admiralty Gardens to the
future waterfront
promenade



建築署
Architectural Services Department



“Land Always Green”
concept is reflected in
greenery takes centre-stage
and architecture assumes a
supporting role.

The Door gives way to
nature and lush landscape.
Buildings flank the central
park area and are angled
towards the Waterfront to
create unity for the whole
development.





“Water Feature”



“Green Court”





The open space layout of the development promotes strong pedestrian connectivity with the surroundings via elevated walkways at the south and east as well as via a landscaped pedestrian deck over Lung Wo Road connecting to the waterfront promenade.



建築署
Architectural Services Department



The LegCo Roof Garden is located on the 5th Floor of the Legislative Council Complex. It provides panoramic view of the Victoria Harbor and is intended for improving the view from the building and serving as relaxing zone or informal gathering place for those working in the building.



建築署
Architectural Services Department



It provides three different types of experience:

- A timber deck next to the building addresses an events lawn
- Intimate seated outlook across the Tamar Park and the Hong Kong waterfront
- Covered environment is created to provide sheltered outdoor seating



建築署

Architectural Services Department





建築署
Architectural Services Department

Thank You