

RIGHT TREE RIGHT PLACE

Quick Reference Guide



Space

Above ground

- Adequate clearance to adjacent buildings, structures, roads and other mature trees

Below ground

- Adequate clearance from underground utilities for root growth and anchorage



Design

- Create a sense of place and belonging
- Forms; colours; textures; scale
- Safety In Design (SID)
- Maximise sustainability
- Minimise maintenance



Function

Enhance biodiversity

- Maximise plant mix
- Create points of interest
- Seasonal interest of foliage and flowers
- Spectacular tree form
- Fragrance

Enhance environment

- Shading; cooling
- Screening; noise attenuation
- Air and water quality improvement
- Erosion control
- Visual amenity

Social, psychological merits

- multi-sensory and cognitive qualities



Choose Species

- Native or exotic
- Evergreen or deciduous
- Fast-growing or slow-growing
- Avoid potentially invasive
- Able to withstand site conditions (wind, drought, salt and shade)
- Not susceptible to disease and pest infestation



Look for Biological Features

- Visual character
- Caution potential impacts to human (toxicity, pollenosis)
- Life cycle
- Avoid intrinsic tree failure characteristics



Maximise Plant Mix

- Maximise biodiversity
- Showcase native habitat
- Enhance landscape connectivity
- Check tree form and shape
- Allow space for crown, height and root growth



Management and Maintenance

- Qualified professionals to assess and maintain your trees
- Undertake Tree Risk Management and mitigation measures to maximise tree safety

Trees come in all shapes and sizes and will change dramatically over their lifetimes. Careful planning and selection are essential for a tree's long term success.

The purpose of this guide is to demonstrate the crucial considerations for establishing the "right tree in the right place". Please seek further advice from a Registered Landscape Architect, qualified horticulturist and landscape contractor.



Soil

- Insist only quality soil mix
- Provide correct soil volume for root growth
- Ensure aerated soil (no excessive compaction)
- Assess pH value for species selection
- Adjust to correct nutrient content
- Allow proper drainage



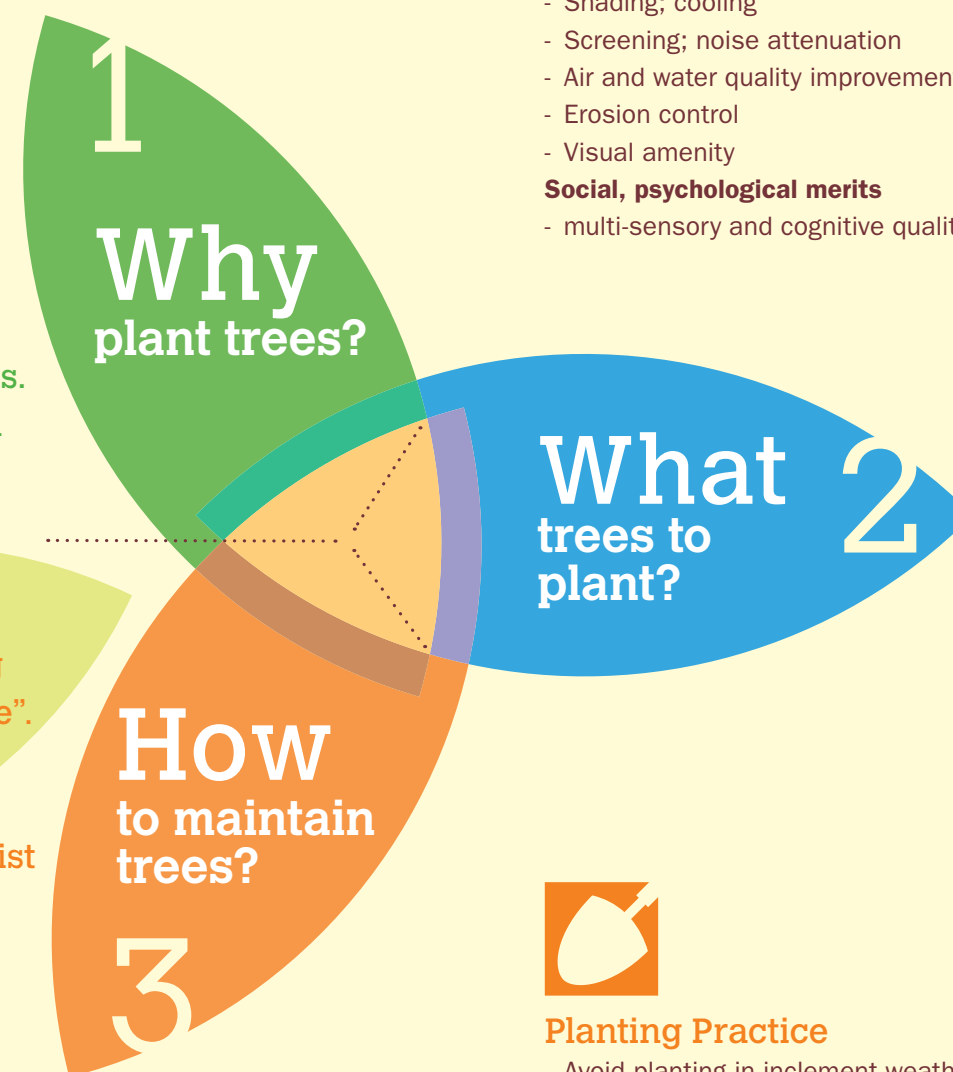
Planting Stock

Buy young

- the trees will grow better

Buy quality

- quality tree stock establish themselves more quickly and require less maintenance in the long run



Planting Practice

- Avoid planting in inclement weather
- Proper preparation of tree pit
- Proper planting depth
- Correct pit size for rootball establishment
- Remove all plastic containers/ rootball wrappings
- Backfill in layers and firm up to remove air pockets
- Apply mulching to keep soil moisture and suppress weed growth
- Appropriate watering after planting
- Regular check up of guy support system if installed