

Polyspora axillaris
大頭茶

Recommended Street Types



General Information

Native	Exotic	Evergreen	Deciduous	Partial Shade	Full Sun
--------	--------	-----------	-----------	---------------	----------

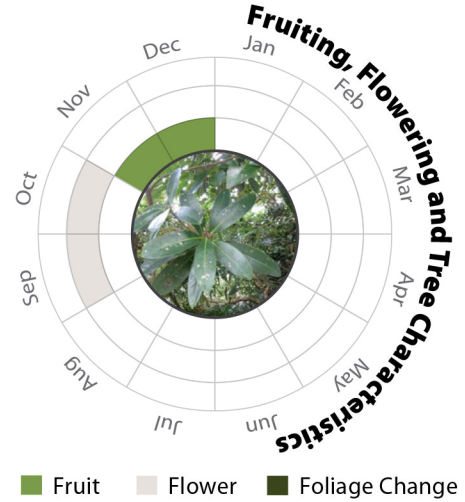
Family: THEACEAE **Heat Tolerance:** Moderate
Special Properties : Fruits, seeds and flowers attractive to wildlife;
 Larval food plant of butterflies



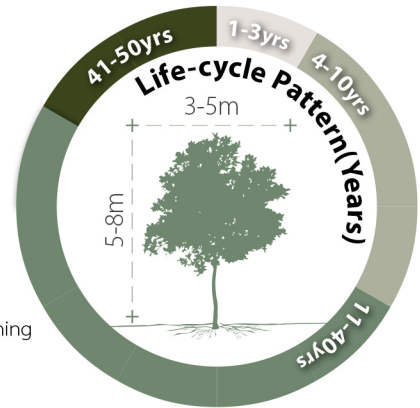
Flowers



Fruits



- Propagation to Seedling
- Sapling to Semi-mature
- Mature
- Senescence



Feature

Ecological Value	Ornamental	Shade Cast

Special Maintenance Requirements

- Needs to be trained to have single trunk
- Shrubby form may require formative pruning

Tolerance

<p>Drought</p> <p>Low Moderate High</p>	<p>Roadside Pollution</p> <p>Low Moderate High</p>	<p>Soil Compaction</p> <p>Low Moderate High</p>
<p>Waterlogging</p> <p>Low Moderate High</p>	<p>Pest & Disease Resistance</p> <p>Low Moderate High</p>	<p>Root System</p> <p>Aggressive Moderate Manageable</p>
<p>Wind</p> <p>Low Moderate High</p>	<p>Pruning</p> <p>Low Moderate High</p>	<p>Soil Volume</p> <p>Large Medium Small</p> <p>pH of Soil</p> <p>Adaptability</p>