

Syzygium cumini
烏墨, 海南蒲桃

Recommended Street Types

A¹/₂ B¹/₂ C¹/₂ D¹/₂ E¹/₂ F¹/₂ G¹/₂



General Information

Native Exotic Evergreen Deciduous Partial Shade Full Sun

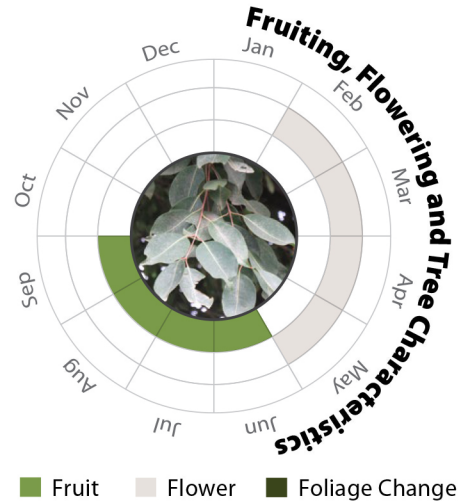
Family: MYRTACEAE **Heat Tolerance:** Moderate
Special Properties : Fruits and flower nectar attractive to wildlife; Larval food plant of butterflies



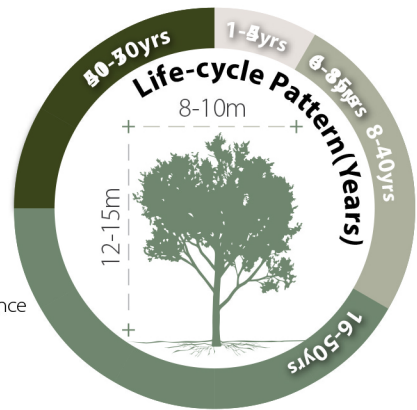
Flowers



Fruits



- Propagation to Seedling
- Sapling to Semi-mature
- Mature
- Senescence



Feature

Ecological Value Ornamental Shade Cast

Special Maintenance Requirements

- Tree crown may require annual maintenance
- Moderate maintenance manageability

Tolerance

<p>Drought</p> <p>Low Moderate High</p>	<p>Roadside Pollution</p> <p>Low Moderate High</p>	<p>Soil Compaction</p> <p>Low Moderate High</p>
<p>Waterlogging</p> <p>Low Moderate High</p>	<p>Pest & Disease Resistance</p> <p>Low Moderate High</p>	<p>Root System</p> <p>Aggressive Moderate Manageable</p>
<p>Wind</p> <p>Low Moderate High</p>	<p>Pruning</p> <p>Low Moderate High</p>	<p>Soil Volume</p> <p>Large Medium Small</p> <p>pH of Soil</p> <p>Adaptability</p>