

# *Thespesia populnea*

恒春黄槿, 繖楊

Recommended Street Types

A	1	B	1	C	1	D	1	E	1	F	1	G	1
	2		2		2		2		2		2		2



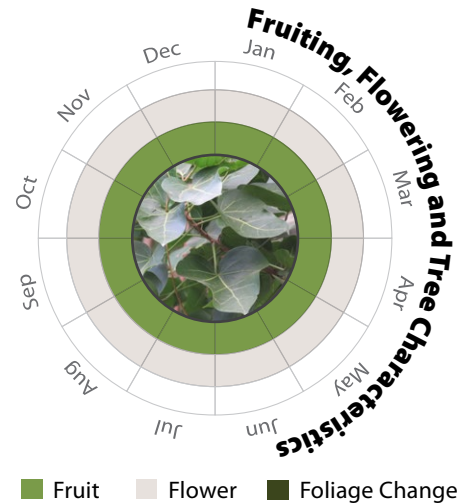
## General Information

Native	Exotic	Evergreen	Deciduous	Partial Shade	Full Sun
--------	--------	-----------	-----------	---------------	----------

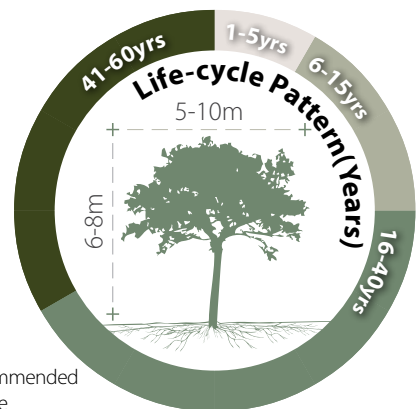
**Family:** MALVACEAE **Heat Tolerance:** Moderate  
**Special Properties :** Mangroves tree; Dense foliage; Tolerates coastal salty winds, showy flowers



Flowers



- Propagation to Seedling
- Sapling to Semi-mature
- Mature
- Senescence



## Feature



Ecological Value



Ornamental



Shade Cast

## Special Maintenance Requirements

- Prone to fungal root and butt rot caused by *Phellinus noxius*
- Moderate maintenance manageability
- Installation of root barriers or guides is recommended
- Tree crown may require annual maintenance

## Tolerance

**Drought**

Low

Moderate

High

**Waterlogging**

Low

Moderate

High

**Wind**

Low

Moderate

High

**Roadside Pollution**

Low

Moderate

High

**Pest & Disease Resistance**

Low

Moderate

High

**Pruning**

Low

Moderate

High

**Soil Compaction**

Low

Moderate

High

**Root System**

Aggressive

Moderate

Manageable

**Soil Volume**

Large

Medium

Small

**pH of Soil**

H

M

L

pH

Adaptability