

# *Ulmus parvifolia*

榔榆

Recommended Street Types

A	1	B	1	C	1	D	1	E	1	F	1	G	1
2	2	2	2	2	2	2	2	2	2	2	2	2	2

## General Information

Native	Exotic	Evergreen	Deciduous	Partial Shade	Full Sun
--------	--------	-----------	-----------	---------------	----------

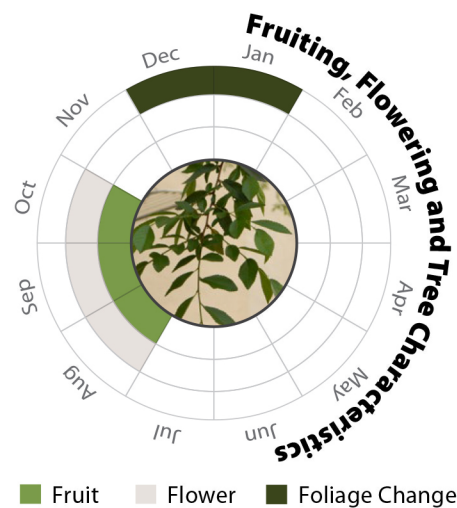
Family: ULMACEAE

Heat Tolerance: Moderate

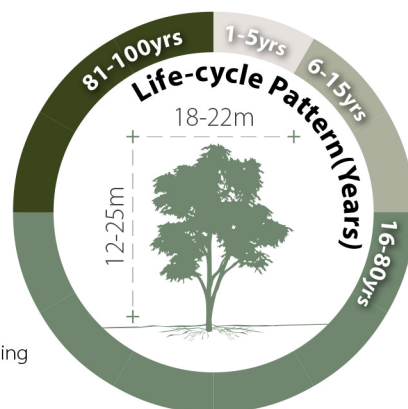
Special Properties : Mottled tree bark



Tree Bark



- Propagation to Seedling
- Sapling to Semi-mature
- Mature
- Senescence



## Feature



Ecological Value



Ornamental



Shade Cast

## Special Maintenance Requirements

- Frequent irrigation is recommended in extended hot and dry periods
- Shrubby form may require formative pruning

## Tolerance

### Drought



Low



Moderate



High

### Waterlogging



Low



Moderate



High

### Wind



Low



Moderate



High

### Roadside Pollution



Low



Moderate



High

### Pest & Disease Resistance



Low



Moderate



High

### Pruning



Low



Moderate

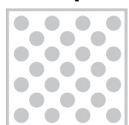


High

### Soil Compaction



Low



Moderate



High

### Root System



Aggressive



Moderate



Manageable

### Soil Volume



Large



Medium



Small

### pH of Soil



Adaptability